

ANCHORAGE EMPLOYMENT REPORT

AUGUST ISSUE

IN THIS ISSUE

A July
jobs update

Anchorage housing
market numbers

The most in-
demand jobs in
Anchorage

SPONSORED



First National Bank

A L A S K A

MEMBER FDIC



THANK YOU.





















Thank you to our sponsors
Alaska Executive Search and
First National Bank Alaska
for making this report
possible.

Find more research at
AEDCWeb.com

All data referenced in this employment report is from the State of Alaska, Dept. of Labor & Workforce Development (www.laborstats.alaska.gov) and from the U.S. Bureau of Labor Statistics (www.bls.gov).

Report compiled by Anchorage Economic Development Corp.

If you are interested in learning more about this data or are interested in how AEDC can help you develop a report, call AEDC at 907.258.3700.

		0.0% YTD TOTAL JOBS 150,400 N/C
		GOV. JOBS -400 Federal -100 State -100 Local -200
		GOODS PRODUCING +700
		OIL & GAS +100
		CONSTRUCTION +500
		MANUFACTURING +100
		SERVICES PROVIDING -800
		HEALTH CARE N/C
		LEISURE & HOSPITALITY +200
		PROFESSIONAL & BUSINESS SERVICES +100

SUMMARY

July 2019 saw an increase of 200 jobs compared with the same time period in 2018. While services providing industries including retail trade continued to shed jobs, goods producing, construction, educational and health service employment saw ongoing growth.

JULY: ON THE UP

Oil & Gas +100
 Construction +400
 Manufacturing +100
 Wholesale Trade +100
 Educational & Health Services +300
 Leisure & Hospitality +300
 Accommodation +100
 Food Services and Drinking Places +100
 Professional & Business Services +100

JULY LOSSES: AT A GLANCE

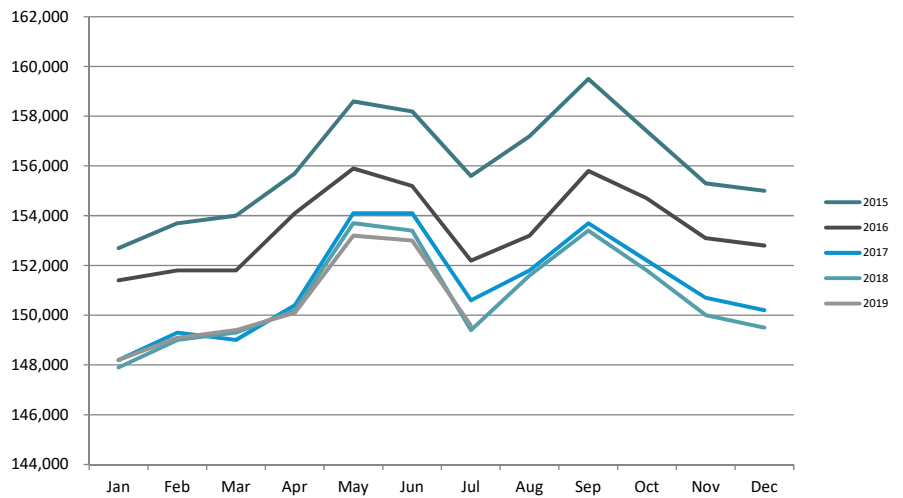
Trade/Transportation/Utilities -400
 Retail Trade -400
 Information -100
 Government -100
 Local Government -200
 State Government -100
 Local Education -200
 Trans/Warehouse/Utilities -100

THE BOTTOM LINE

While preliminary July job numbers were up slightly, recent prior months have shown negative outcomes that leave 2019 job totals flat year-to-date. We are not optimistic at this point that the recession will see an end this year.

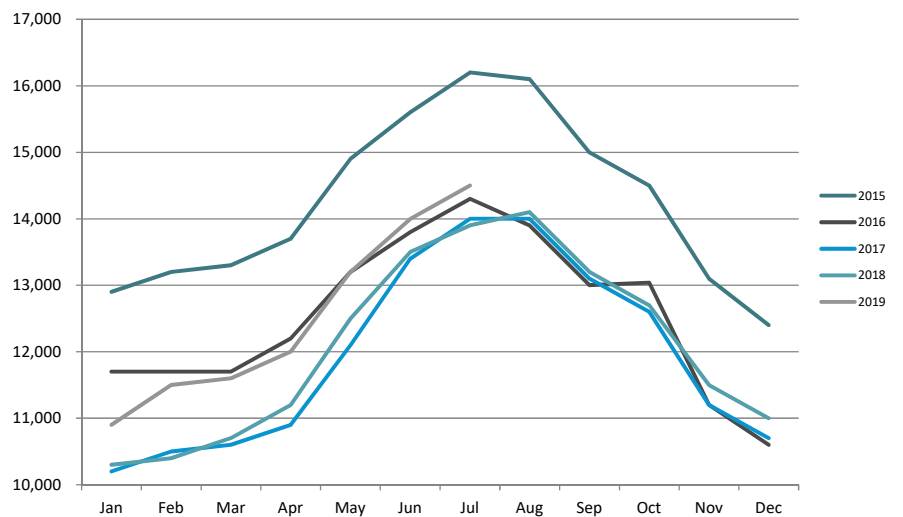
ANCHORAGE EMPLOYMENT

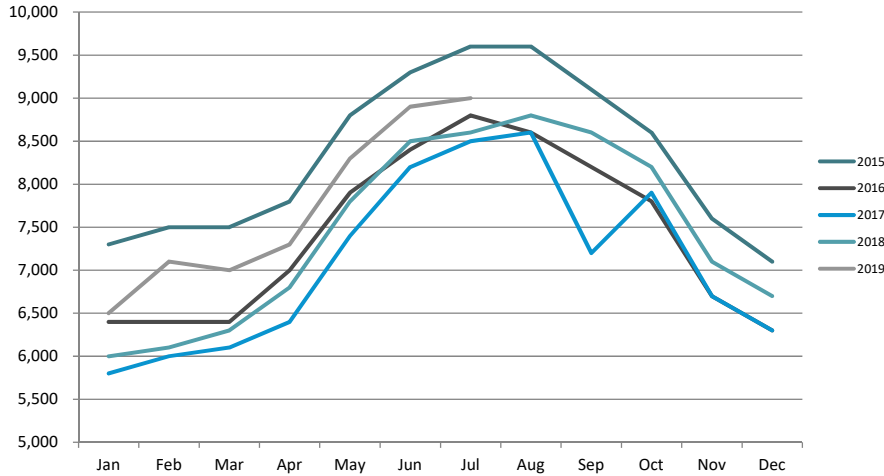
Total Anchorage employment was at 149,600 in July 2019, up 200 jobs from July 2018 numbers.



GOODS PRODUCING JOBS

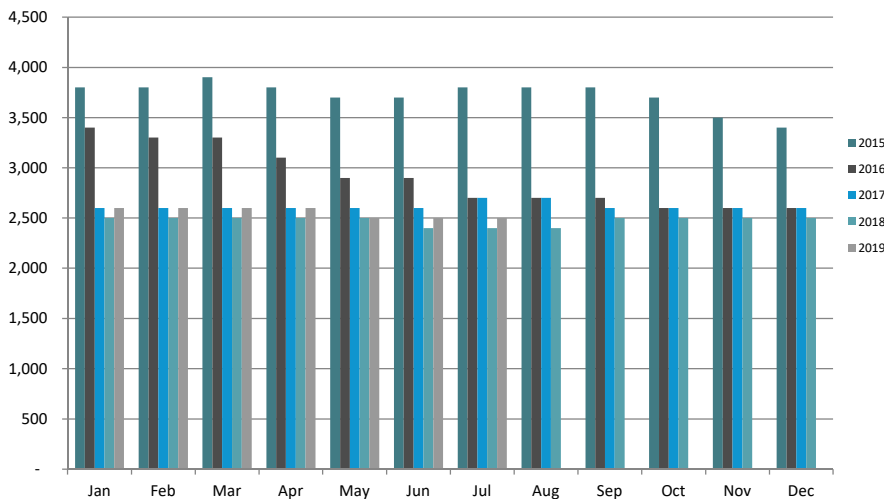
Anchorage's goods producing sector added 700 new jobs in July 2019 compared with July 2018. At 12,500 jobs, the number has risen since 2016, though it remains below 2014 and 2015 levels. With out-migration reducing workforce, we don't expect numbers to reflect 2014 levels anytime soon.





CONSTRUCTION EMPLOYMENT

At 9,000 jobs, Anchorage construction employment added 500 jobs between July 2018 and July 2019. Growth is still attributable to the November 2018 earthquake, but also a bump related to summer construction projects.



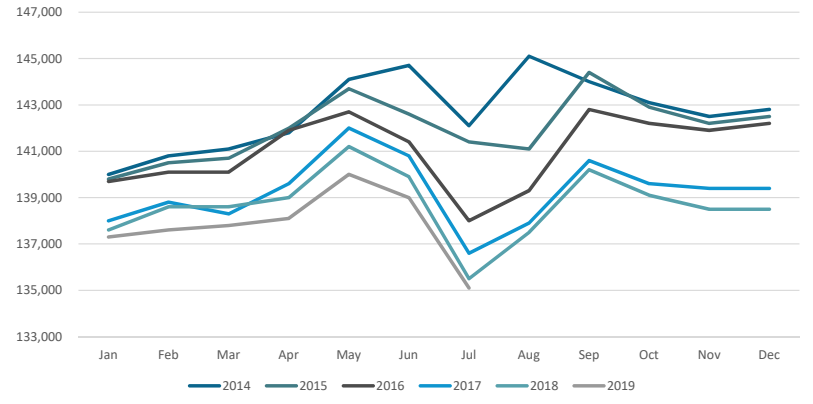
OIL & GAS EMPLOYMENT

Anchorage's oil and gas sector is seeing a small amount of growth; up 100 positions between July 2018 and July 2019. At 2,500 jobs, the number has grown modestly over the last year. We remain hopeful for continued growth in this industry in the coming years.



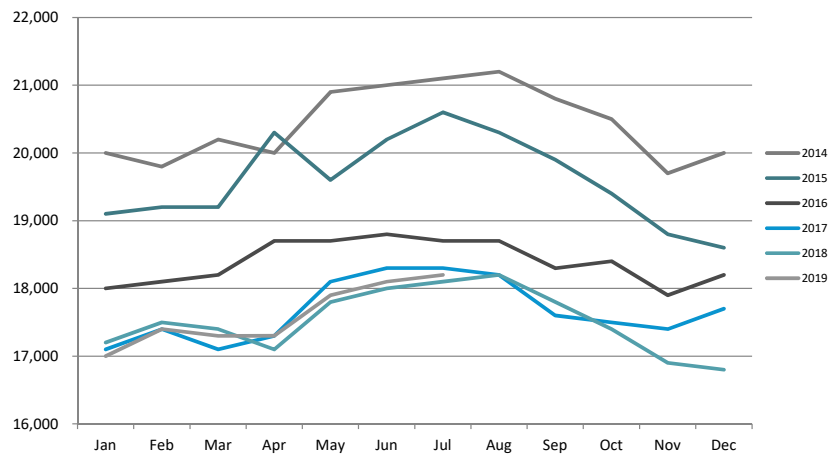
SERVICES PROVIDING JOBS

Services providing industries shed approximately 800 jobs between July 2018 and July 2019.



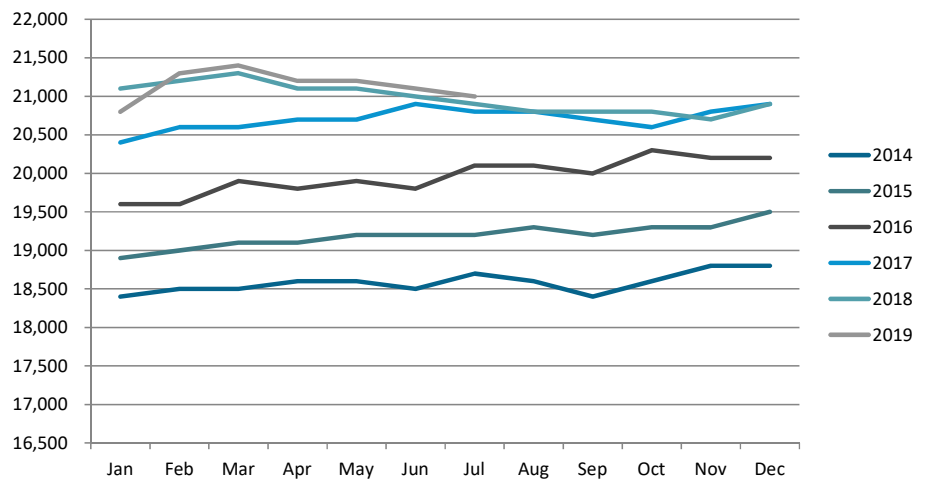
PROFESSIONAL & BUSINESS SERVICES

Anchorage's professional & business services sector lost approximately 100 jobs between July 2018 and July 2019. We don't expect to see this number rebound to 2014 levels anytime soon.



HEALTH CARE EMPLOYMENT

Health care employment is flat in the first part of 2019, showing no job growth compared to July 2018. This industry has grown every year since 2014. 2019 is the first year we haven't seen significant growth.



NOW HIRING

OPENINGS BY OCCUPATION LAST 30 DAYS

SOURCE: *JOBSEQ*®

Waiters and waitresses

TOTAL ADS: 52

Average
annual:
\$34,700

Accountants and Auditors

TOTAL ADS: 74

Average
annual:
\$81,800

Hotel, Motel, Resort Desk Clerks

TOTAL ADS: 35

Average
annual:
\$32,000

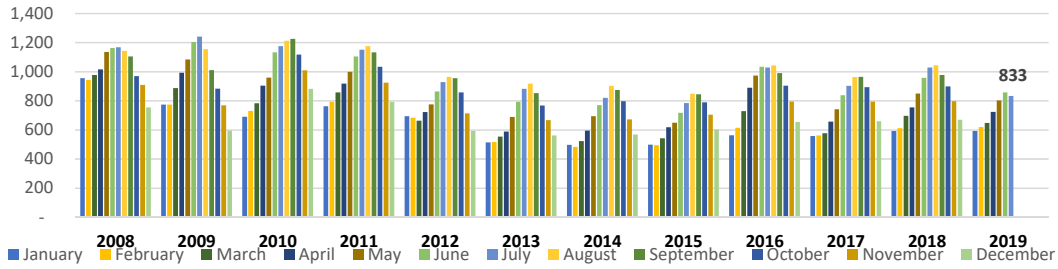
TOP EMPLOYERS

TOP EMPLOYERS BY TOTAL ADS MARCH 2019

SOURCE: *JOBSEQ*®

Company	Total Ads
Providence Health & Services	536
The University of Alaska	303
HCA	204
Municipality of Anchorage	204
Workplace Alaska	170
Alaska Native Tribal Health Consortium	153
Southcentral Foundation	146
Carrs Quality Center	137
State of Alaska	129
Aramark Food and Support Services Group	120

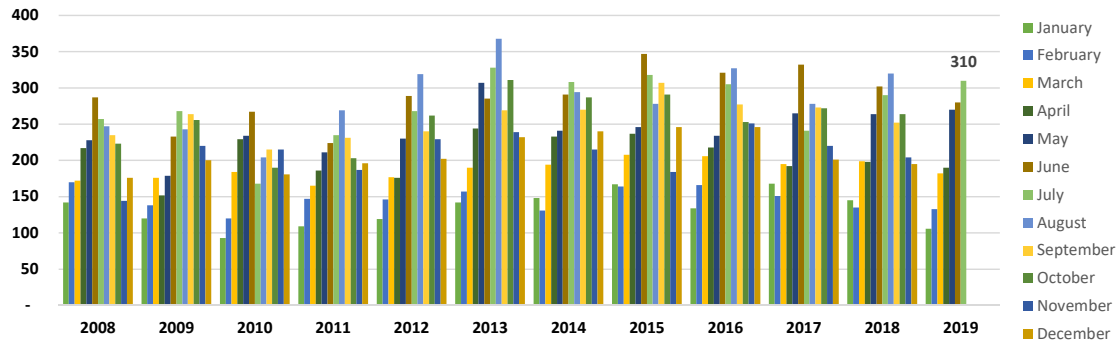




ANCHORAGE SINGLE-FAMILY HOME LISTINGS

YTD 10-YEAR COMPARISON

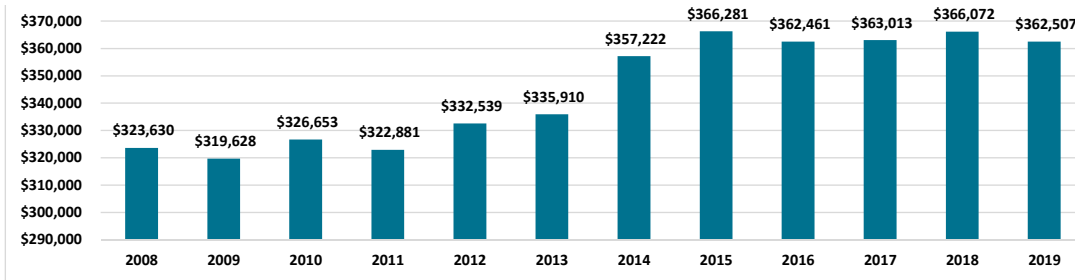
Anchorage’s single family home listings stood at 833 as of July 2019, a decrease of about 200 from July 2018.



ANCHORAGE SINGLE-FAMILY HOME MONTHLY UNIT SALES

YTD 10-YEAR COMPARISON

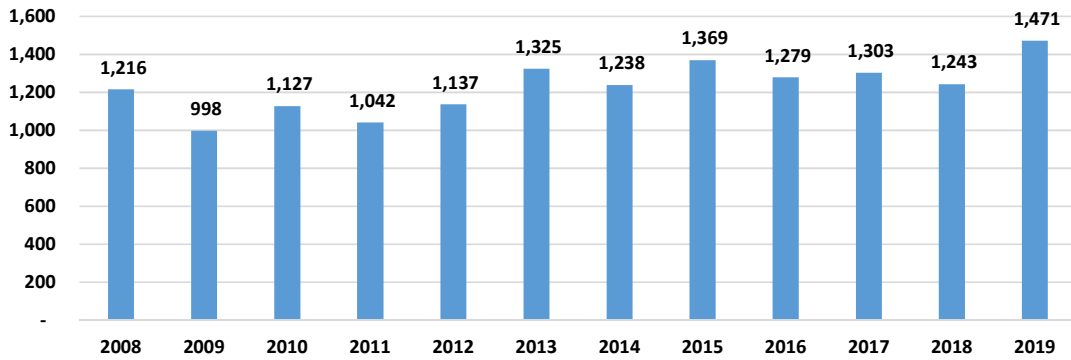
Anchorage’s single family home monthly unit sales stood at 310 in July 2019, which is up about 10% from July 2018 at 290 sales. July of 2013 saw the highest number of sales at 368.



ANCHORAGE SINGLE-FAMILY HOME AVERAGE SALES PRICE

YTD 10-YEAR COMPARISON

The average price of a single family home in Anchorage shrank to \$377,177 in July 2019 from \$387,933 in July 2018, which was the highest average price over the past decade. July 2019 is in line with 2015 average home costs.



ANCHORAGE SINGLE-FAMILY HOMES TOTAL UNIT SALES

YTD 10-YEAR COMPARISON

The number of single family home unit sales decreased in July 2019 to 1,471, down from this time last year at 1,533.



SOUTHCENTRAL ALASKA UNEMPLOYMENT ANALYSIS (2019, YTD)

TAKEAWAY

Unemployment rates in Anchorage have remained stable in the first part of 2019 fluctuating between 5.7 and 5.3 percent unemployment. To date there are 7,092 unemployed individuals compared to 7,956 in July of 2018, about a 0.1% decrease.

Anchorage continues to show the lowest unemployment numbers in the southcentral region with Kenai coming in at 5.4% unemployment, the Matanuska-Susitna Borough at 6.5% unemployment and the State of Alaska as a whole at 5.5% unemployment for July 2019.

	MAY REVISED	JUNE REVISED	JULY PRELIMINARY	19 YTD AVERAGE	18 YTD AVERAGE	19 VS 18 YTD
MUNICIPALITY OF ANCHORAGE						
Labor force	149,795	150,581	150,384	149,734	152,036	(2,342)
Employment	142,749	142,809	143,292	143,064	143,062	2
Unemployment	7,808	7,772	7,092	8,002	8,643	(641)
Employment Rate	5.2%	5.2%	4.7%	5.3%	5.7%	-0.3%
MAT-SU BOROUGH						
Labor force	46,885	47,382	47,039	47,107	47,141	(34)
Employment	43,639	43,906	43,946	43,519	42,996	523
Unemployment	3,246	3,476	3,067	3,584	4,153	(568)
Employment Rate	6.9%	7.3%	6.5%	7.6%	8.8%	-1.2%
KENAI PENINSULA BOROUGH						
Labor force	25,424	27,390	27,467	26,056	27,146	(1,091)
Employment	24,746	25,754	25,979	24,568	24,826	(258)
Unemployment	1,678	1,636	1,488	1,916	2,320	(404)
Employment Rate	6.4%	6.0%	5.4%	7.4%	8.5%	-1.2%
SOUTHCENTRAL REGION						
Labor force	223,104	225,353	224,890	222,896	226,363	(3,467)
Employment	210,372	212,469	213,243	209,394	211,247	(1,853)
Unemployment	12,732	12,884	11,647	13,502	15,117	(1,614)
Employment Rate	5.7%	5.7%	5.2%	6.1%	6.7%	-0.6%
STATE OF ALASKA						
Labor force	350,619	357,246	361,483	352,104	360,970	(8,866)
Employment	328,891	335,128	341,508	328,777	334,587	(5,810)
Unemployment	21,728	22,118	19,975	23,327	26,383	(3,055)
Employment Rate	6.2%	6.2%	5.5%	6.6%	7.3%	-.7

Employment By Industry, July 2019

	Average Monthly Employment			Compared to July 2018	
	July 2019*	June 2019*	July 2018	Change	Percent
Total Nonfarm Employment	353,100	348,500	351,300	1,800	0.5%
Total Private	277,100	267,300	276,000	1,100	0.4%
Mining and Logging	13,400	13,400	12,900	500	3.9%
Oil and Gas	9,800	9,900	9,300	500	5.4%
Construction	18,900	18,600	18,300	600	3.3%
Manufacturing	24,000	16,300	23,700	300	1.3%
Trade, Transportation, Utilities	69,400	68,900	69,200	200	0.3%
Wholesale	6,600	6,600	6,600	0	0%
Retail	37,400	37,300	37,300	100	0.3%
Transportation, Warehousing, Utilities	25,400	25,000	25,300	100	0.4%
Information	5,400	5,400	5,700	-300	-5.3%
Financial Activities	12,000	12,000	12,400	-400	-3.2%
Professional and Business Services	28,400	28,100	28,500	-100	-0.4%
Education and Health	50,400	50,700	50,300	100	0.2%
Health Care	38,200	38,200	38,000	200	0.5%
Leisure and Hospitality	44,000	42,600	43,700	300	0.7%
Other Services	11,200	11,300	11,300	-100	-0.9%
Total Government	76,000	81,200	75,300	700	0.9%
Federal ¹	15,800	15,900	15,400	400	2.6%
State ²	22,900	22,700	22,600	300	1.3%
Local ³	37,300	42,600	37,300	0	0%

Employment By Industry, 2015 to 2018 Monthly Average

	2018 jobs	2015 jobs	Change	% chg
Total Nonfarm Employment	327,700	339,100	-11,400	-3%
Total Private	247,300	257,000	-9,700	-4%
Mining and Logging	12,700	17,400	-4,700	-27%
Oil and Gas	9,400	14,200	-4,800	-34%
Construction	15,800	17,600	-1,800	-10%
Manufacturing	12,600	14,300	-1,700	-12%
Trade, Transportation and Utilities	64,500	65,600	-1,100	-2%
Wholesale	6,400	6,500	-100	-2%
Retail	35,800	37,300	-1,500	-4%
Trans, Warehousing and Utilities	22,200	21,800	400	2%
Information	5,600	6,300	-700	-11%
Financial Activities	11,700	12,100	-400	-3%
Professional and Business Services	27,300	30,100	-2,800	-9%
Education and Health	50,400	47,500	2,900	6%
Health Care	38,000	34,300	3,700	11%
Leisure and Hospitality	35,600	35,000	600	2%
Other Services	11,100	11,100	0	0%
Total Government	80,400	82,000	-1,600	-2%
Federal ¹	14,900	14,900	0	0%
State ²	23,600	25,800	-2,200	-9%
Local ³	41,900	41,300	600	1%

*Estimate

¹Excludes uniformed military

²Includes the University of Alaska

³Includes public schools and tribal government

Note: Columns in the 2015 to 2018 table may not sum due to rounding.

Source: Alaska Department of Labor and Workforce Development, Research and Analysis Section



AEDC
Anchorage Economic
Development Corporation